

# EverSmart Pro II Specifications

## Technology:

Flatbed; CCD scanner with; tri-linear, 8,000 pixel, anti-blooming CCD; up to 30,500 optical pixels per line. Full XY Stitch scanning technology.

## Size-Independent Resolution:

8,200 dpi maximum scanning resolution  
3,175 x 8,200 dpi maximum optical resolution

**Note:** Using XY Stitch scanning technology, the resolution is valid over the entire format for any size CT and LW original (from 35mm to A3+/12 x 17 in.).

**Max. Density:** 4.0  
**Density Range:** 3.7

**Color Depth:** 42 bits (14 bits per color)

## Productivity:

40 scans/hour  
Benchmark: 6 x 7 cm, 250%, 300 dpi, CMYK, using Power Macintosh® G3 400 MHz computer

## Scan Modes:

CMYK or RGB, gray scale, lineart (bitmap and LW), ICC color management

## Input:

- Types of originals:  
Reflective, transparency, negative, positive, color, B&W, lineart, printed material
- Size of originals:  
Transparencies and Reflectives:  
Up to 305 x 432 mm / 12 x 17 in. , full A3+
- Thickness of originals:  
Transparent – Up to 5 mm / 3/16 in.  
Reflective – Unlimited

## File Formats:

- CreoScitex: Scitex® CT, Scitex LW, Scitex PSImage
- EPSF: Normal, DCS, ICS, RGB, CMYK, gray scale and bitmap
- TIFF: RGB, CMYK, CMY, gray scale and bitmap (Macintosh® and PC formats)
- PICT: RGB, gray scale and bitmap
- Adobe® Photoshop®: CMYK, RGB
- Targa: RGB

## Scaling:

20-2,700% at 300 dpi over the entire format  
Scaling steps: 0.1%

## Platform (minimum requirements):

- Power Macintosh® computer PCI with 155 MB RAM free for scanning application (for EverSmart DOT application a Macintosh G3 computer is recommended), system version 8.6 or higher (full system, including all system extensions)
- 1 GB hard disk
- 17 in. color monitor
- 24-bit color display
- Color sync 2.6.1 or higher

**Note:** Spec. is for EverSmart scanning application ver. 3.0; for most updated spec. see website

**Electrical Requirements:** 100-240 Vac, 50/60 Hz, 290 W

**Dimensions (HxWxD):** 36 x 87 x 70 cm / 14 x 34 x 27.5 in.

**Weight:** 70 kg / 154 lb

**Operating Temperature:** 16-27°C / 61-80°F

## Realtime Humidity:

40-70% non-condensing

## Specifications Conformance:

UL, CE, ISO 9002

## Key Features:

- High resolution (CT and lineart) over the entire format
- SmartSet function for optimizing image quality
- Automatic image analysis
- Parallel workflow
- CMYK, RGB and USM (unsharp masking) on-the-fly
- Intuitive, icon-based interface
- Image-editing and proofing tools, including HLS color correction, LS Curves, Split Screen, and Color Correction Mask
- Computer-based training
- Built-in light table

## Options:

- EverSmart DOT application: Copydot scanning and Digital Descreening
- EverSmart Oil Mounting Station



High Resolution, High Productivity  
Flatbed Scanner

# EverSmart Pro II

SCANNING



Together, CreoScitex and printCafe provide solutions integrating the entire printing process. printCafe offers e-commerce services integrated with a broad portfolio of print management systems.



Presses, proofing, and plate production done on CreoScitex equipment. Printed using 4-color process and a gloss varnish. Screened using Staccato™ 20 micron second-order stochastic (FM) screening.

© 2001 Creo Products Inc. CreoScitex is a division of Creo Products Inc. The products mentioned in this document are trademarks or service marks of Creo Products Inc. and may be registered in certain jurisdictions. Other company and brand, product and service names are for identification purposes only and may be trademarks or registered trademarks of their respective holders. Data subject to change without notice.



[www.creoscitex.com](http://www.creoscitex.com)

**CreoScitex**  
3700 Gilmore Way  
Burnaby, British Columbia  
Canada  
V5G 4M1  
Tel: 1-604-451-2700  
Fax: 1-604-437-9891

**CreoScitex Corporation Ltd.**  
P.O. Box 330  
Herzlia Industrial Park  
46103 Herzlia, Israel  
Tel: 972-9-959-7222  
Fax: 972-9-950-2922

**CreoScitex America, Inc.**  
Eight Oak Park Drive  
Bedford MA 01730  
USA  
Tel: 1-781-275-5150  
Fax: 1-781-275-3430

**CreoScitex Europe, S.A**  
Waterloo Office Park  
Dreve Richelle 161  
B-1410 Waterloo,  
Belgium  
Tel: 32-2-352-2511  
Fax: 32-2-351-0915

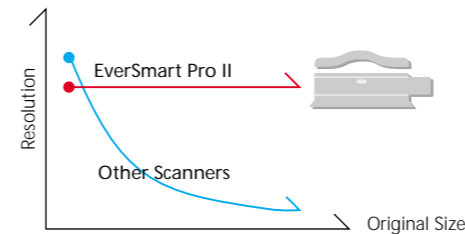
**CreoScitex Asia Pacific Ltd.**  
3/F 625 King's Road  
North Point  
Hong Kong  
Tel: 852-2882-1011  
Fax: 852-2881-8897

**CreoScitex Middle East/Africa**  
P.O. Box 330  
Herzlia Industrial Park  
46103 Herzlia B, Israel  
Tel: 972-9-9597585  
Fax: 972-9-9597787

**Nihon CreoScitex Ltd.**  
Forefront Tower II  
3-13-1 Kachidoki.  
Chou-ku  
Tokyo 104-8577, Japan  
Tel: 81-3-5560-7152  
Fax: 81-3-5560-7249

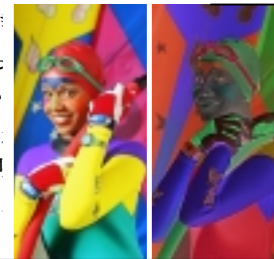


Scanning resolution reaches 8,200 dpi, and scaling ranges from 20 to 2,700%.



EverSmart XY Stitch scanning technology assures high resolution, as well as uniform sharpness and quality, regardless of original size

ておりますか  
換・返品をお  
ご負担くださ  
り後、約3~4  
Bカードもご利  
用円(税別)  
担ください。



The EverSmart Pro II scanner features great flexibility in input types, including reflective, negative, color, black-and-white, lineart and screened film.

## EverSmart Pro II

The EverSmart™ Pro II is a full solution, professional-quality scanner featuring world-renowned XY Stitch™ scanning technology. A new advanced electronics board provides even greater productivity than its predecessor, the EverSmart Pro scanner. In addition, a variety of newly developed application features assure maximum control over quality with a choice of automatic or manual functionalities.

### Advanced technologies for uniform sharpness and resolution

Unique EverSmart XY Stitch scanning technology includes scanning optics with motion along the x and y axes. This enables accurate positioning of the scan head directly below the center of each image, regardless of where the original is placed on the scanning area, assuring uniform sharpness and resolution anywhere on the scanner format.

### Maximum resolution for highest quality

The EverSmart Pro II scanner features high resolution across the entire scanning format, providing a maximum scanning resolution of 8,200 dpi. Seventy 35 mm images can be scanned in one batch, all at a maximum optical resolution of 3,175 dpi assuring the highest quality. You can then select a full poster image, or crop any part of

a large original, and enlarge either up to 2,700%, without any loss in image quality.

### High productivity in hardware and software functionalities

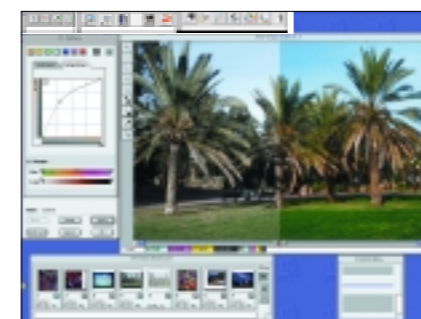
With an enhanced electronics board, the EverSmart Pro II is a fast and productive scanner that allows

you to produce more than 40 scans per hour. Parallel workflow enables simultaneous setup and scanning by a single operator, while offline mounting of user-defined masks increases productivity even further. Pre-defined masks allow efficient scanning in one job with no loss of quality.

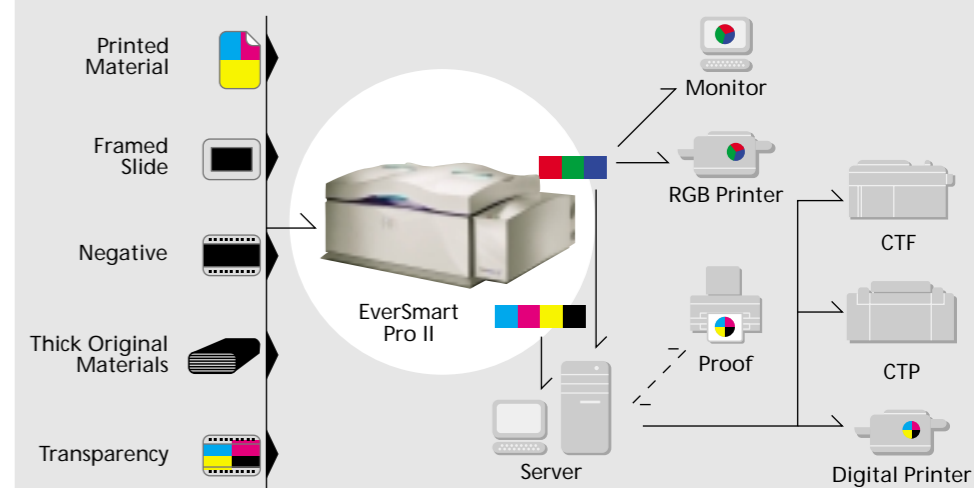


### Automatic and manual tools for top quality scans

The EverSmart scanning application provides automatic and manual tools for achieving top-quality scans. SmartSet is a powerful feature that automatically adapts the scanning parameters of each original to supplied or customized input categories such as people, outdoor, metal and still life. Once input categories are defined, all parameters are optimized accordingly. The scanner has a host of innovative color correction tools such as LS Curves, for modifying the luminance and saturation values of a selected color, and interactive Color Correction Mask for viewing the effect of all changes on the screen as you make them. In addition, a Split Screen feature allows side-by-side, before-and-after viewing. ICC input and output profiles can be embedded in the scan file, optimizing the result for any output device. ICC soft



LS Curves enables color correction by modifying the luminance and saturation values of a selected color. Split Screen allows side-by-side, before-and-after viewing.



Full scanning media and workflow flexibility

proofing is also available to preview output results of scans with different output profiles.

### Full scanning media and workflow flexibility

The EverSmart Pro II scanner is the complete solution for all scanning needs. It offers total flexibility in image size, thickness, material and format: framed images, mounted slides, thick books, paintings, packages, and other unusual shapes and materials can be placed on the scanner bed.

The scanning application supports all standard workflows: CMYK for printing; RGB for archiving, second generation and online screen applications; and ICC for color management environments

### EverSmart DOT for scanning screened films

An optional application provides two additional scanning workflows – Copydot and Digital Descreening.

### Oil Mounting for enhanced image quality

The optional EverSmart Oil Mounting Station®, used to enhance image quality and productivity, is the first professional offline oil mounting system designed for flatbed scanners. Oil mounting preserves high image quality and is recommended for scanning images that are to be enlarged by more than 800%, or if originals are scratched.